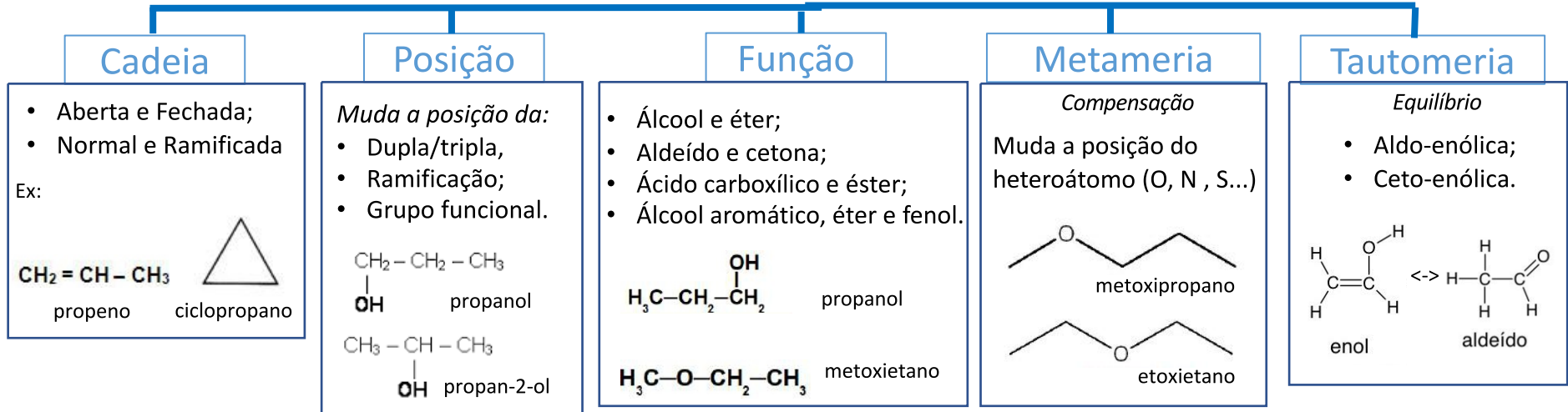


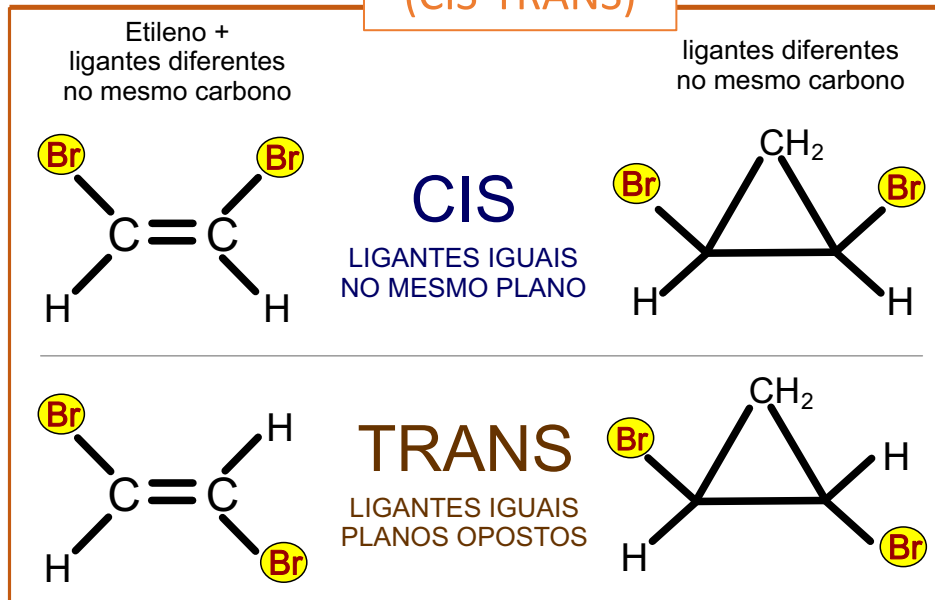
PLANA (constitucional)



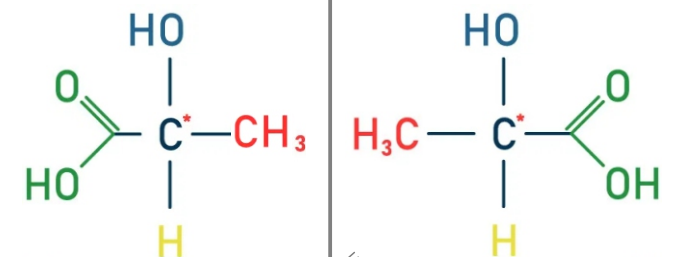
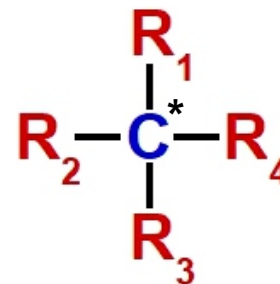
Geométrica (CIS-TRANS)

ESPACIAL (estereoisomeria)

Óptica



* Carbono Quiral = Assimétrico
4 ligantes diferentes



DEXTRÓGIRO
D ou (+)
(desvia a luz polarizada para a direita)

LEVÓGIRO
L ou (-)
(desvia a luz polarizada para a esquerda)